



EN  
PT  
ES  
DE  
FI  
NL  
IT  
FR  
EL  
RU  
PL  
HU  
SV

# 58622 OWNER'S MANUAL

[bestwaycorp.com/support](http://bestwaycorp.com/support)

Visit Bestway YouTube channel 



## OWNER'S MANUAL

### IMPORTANT SAFETY INSTRUCTIONS

PLEASE READ THE FOLLOWING SAFETY WARNINGS AND THE INSTRUCTIONS CAREFULLY BEFORE USING THE APPLIANCE AND KEEP FOR FUTURE REFERENCE

- This is not a TOY. Children should be kept out of reach from this robot and its accessories.
- Never allow children to operate this product.
- This robot is not intended for use by someone with reduced physical, sensory or mental capabilities or a lack of experience and knowledge unless they have been given instructions concerning the appliance and are under supervision of the person responsible for their safety.
- Make sure the robot is fully immersed in the water before operation. The minimum water level required to operate the robot must reach above the swivel head of the robot. Operating the robot when it is not immersed in the water correctly could damage the unit and void the warranty as a result.
- Maximum operating depth in water is 3 meters (10 ft.).
- Operating water temperature: 5°C (41°F) - 35°C (95°F).
- Only use the detachable supply unit (external adaptor) provided with this robot to charge the battery.
-  Detachable supply unit (external adaptor).
- For the purposes of recharging the battery, only use the detachable supply unit (external adaptor : DSS18-0842000-B / DSS18-0842000-C) and charging base that provided with this robot to charge the battery.
- **WARNING** - This appliance can be used by children aged from 8 years and above and persons with reduced physical, sensory or mental capabilities or lack of experience and knowledge if they have been given supervision or instruction concerning use of the appliance in a safe way and understand the hazards involved. Children shall not play with the appliance. Cleaning and user maintenance shall not be made by children without supervision. (For EU market)
- **WARNING** - This appliance is not intended for use by persons (including children) with reduced physical, sensory or mental capabilities, or lack of experience and knowledge, unless they have been given supervision or instruction concerning use of the appliance by a person responsible for their safety. Children should be supervised to ensure that they do not play with the appliance. (For market other than EU)
- Connect the external adaptor to a power source through a residential current device (RCD) / a ground fault circuit interrupter (GFCI). If in doubt, consult a qualified professional electrician.
- Do not use this robot if any damage is detected.
- Replace damaged parts as soon as possible. Only use parts certified by the distributor or manufacturer.
- Turn off the robot, disconnect the external adaptor from the power source, and unplug the external adaptor from the charging base, before detaching the robot from the charging base.
- Disconnect the pump from the supply mains before carrying out user maintenance such as cleaning the filter.
- The battery installes is a rechargeable Li-ion battery pack. Never attempt to replace with this product.
- The robot is only to be recharged with external adaptor and charging base delivered with this product.
- DO NOT handle the robot, external adaptor and charging base while it is charging with wet limbs and without shoes.
- You should not operate this robot when people/pets are present in the water.
- DO NOT use this robot without an intact filter in place, otherwise your warranty will be voided as a result.
- Suction entrapment hazard: This robot generates suction. Do not allow hair, body, and any loose parts of your clothing to make contact with the suction hole of the robot during its operation.
- Never insert body parts, clothing and other objects into the openings and moving parts of the robot.
- DO NOT use this robot to pick up any toxic substance, flammable and combustible liquids such as gasoline, and in the presence of explosive or flammable fumes.
- Under no circumstances should you attempt to disassemble the robot and replace the impeller, motor, and battery by yourself.
- Never insert fingers and any object to touch the impeller.
- This robot shall not be used by children.
- The battery must be removed from the robot before it is scrapped.
- This robot contains a battery that are only to be removed by skilled persons.
- The robot must be disconnected from the supply mains as the battery is removed.
- For detail regarding battery dsiposal, refer to the section "Battery Disposal" in this manual.
- The battery must be disposed safely in accordance with local ordinances or regulations.
- The robot contains a maintenance-free, rechargeable lithium-ion battery pack, which must be disposed

properly. Recycling is required; please contact your local authorities for more information.

- External adaptor and charging base:
  - Never use the external adaptor and charging base for anything other than charging the battery of the robot that is supplied in the same pack.
  - The external adaptor and charging base should not be used outdoors, nor should it be exposed to rain, humidity, any liquid or heat.
  - The transformer (or external adaptor) is to be located outside zone 1.
  - Keep the external adaptor and charging base out of reach of children.
  - Never use the external adaptor and charging base if any damage is detected.
  - DO NOT handle the external adaptor and charging base with wet hands.
  - Keep the external adaptor disconnected from power when it is not in use.
  - Never attempt to open the external adaptor.
  - If the supply cord is damaged, it must be replaced by the manufacturer, its service agent or an equally-qualified person in order to prevent hazards of any kind.
  - Make sure the robot is completely dry before charging.

#### BATTERY DISPOSAL:

Recycling is required, please contact your local authority for information.

- The battery must be removed from the pool vacuum before it is scrapped.
- The pool vacuum must be disconnected from the supply mains (electrical outlet) when removing the battery.
- The battery must be disposed of safely and properly.

#### CAUTION!

- This robot is designed for underwater use only; it is not an all-purpose vacuum cleaner. DO NOT attempt to use it to clean anything other than your pool.
- Use only original accessories delivered with this product.
- DO NOT use this robot right after pool-shocking. It is recommended to first leave the pool circulating for at least 24-48 hours.
- If you are planning on using the robot in a saltwater pool, make sure all salt are dissolved before placing it into the water.
- It is not recommended to use this robot with another automatic cleaner/cleaner simultaneously.
- Avoid picking up hard, sharp objects with this product which may damage the robot and filter.
- To avoid damaging the external adaptor and charging base, do not attempt to carry the robot by the cable of external adaptor or pull the cable to disconnect it from

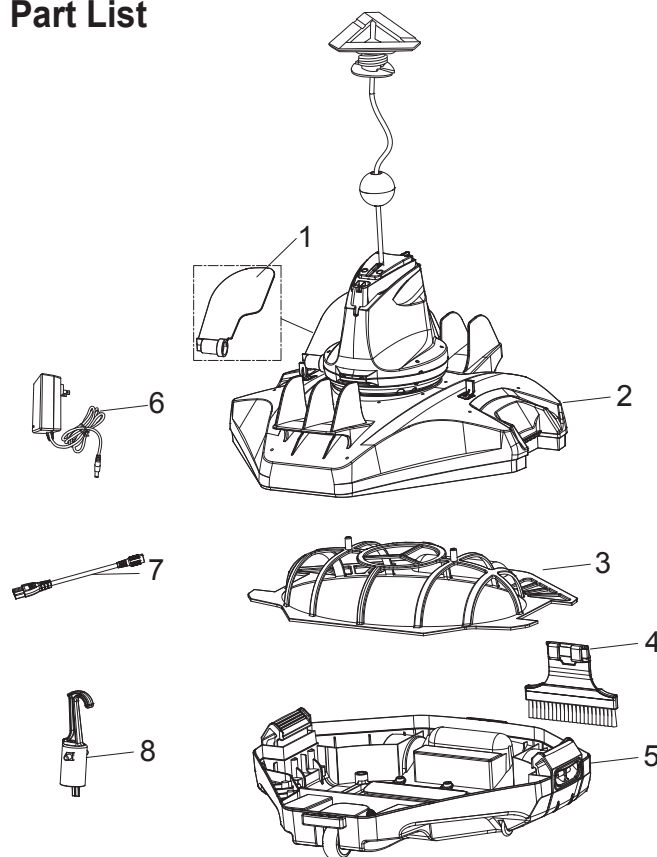
the power source and charging base.

- Charge the robot indoors in a clean, dry area with good ventilation and away from sunlight.
- DO NOT leave the robot charged for over 10 hours.
- If the robot will not be used for an extended period, detach it from the charging base and use a damp cloth to clean and dry the robot and its accessories. Make sure to charge the robot to about 30% to 50% of the battery capacity before it is stored. Store in a well-ventilated area away from sunlight, heat, ignition sources, pool chemicals, and children. Recharge the robot every three months.
- All actions concerning the disassembly of the swivel head (ie. battery disposal) can only be carried by an authorized technician.

**Above warnings and cautions are not intended to incorporate all possible instances for risks and / or severe injuries.** Pool / spa owners should always exercise extra caution and common sense when utilizing the product.

## SAVE THESE INSTRUCTIONS

### Part List



| Part No. | Part Code | QTY |
|----------|-----------|-----|
| 1        | P05700    | 1   |
| 2        | P05626    | 1   |
| 3        | P05628    | 1   |
| 4        | P05632    | 1   |
| 5        | P05627    | 1   |
| 6        | P05696    | 1   |
| 7        | P03880    | 1   |
| 8        | P03879    | 1   |

The robot has a water-propelling nozzle at the bottom of the swivel head. Water is first sucked in through the suction mouth at the bottom of the robot, which then goes through the filter and is discharged via the propelling nozzle. Water jetting from the nozzle propels the robot forward. Once the robot stops against an obstacle such as the pool wall, its side flap sways and its swivel head turns 180°, allowing the robot to move in the opposite direction. The robot moves in a generally straight pattern in one direction and in an arc pattern in the other direction. The robot vacuums the pool bottom as it moves, collecting debris in its compartment.

## Assembly and Operation

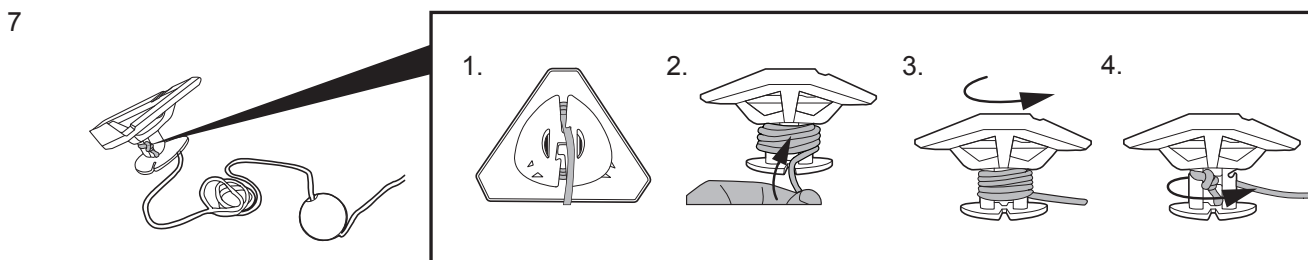
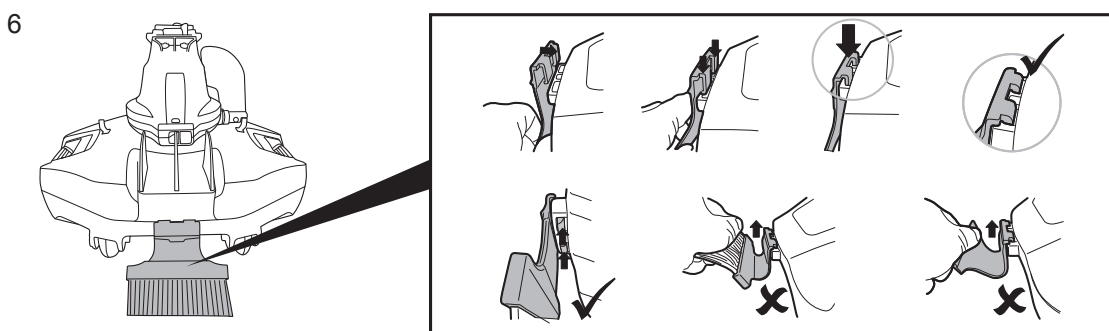
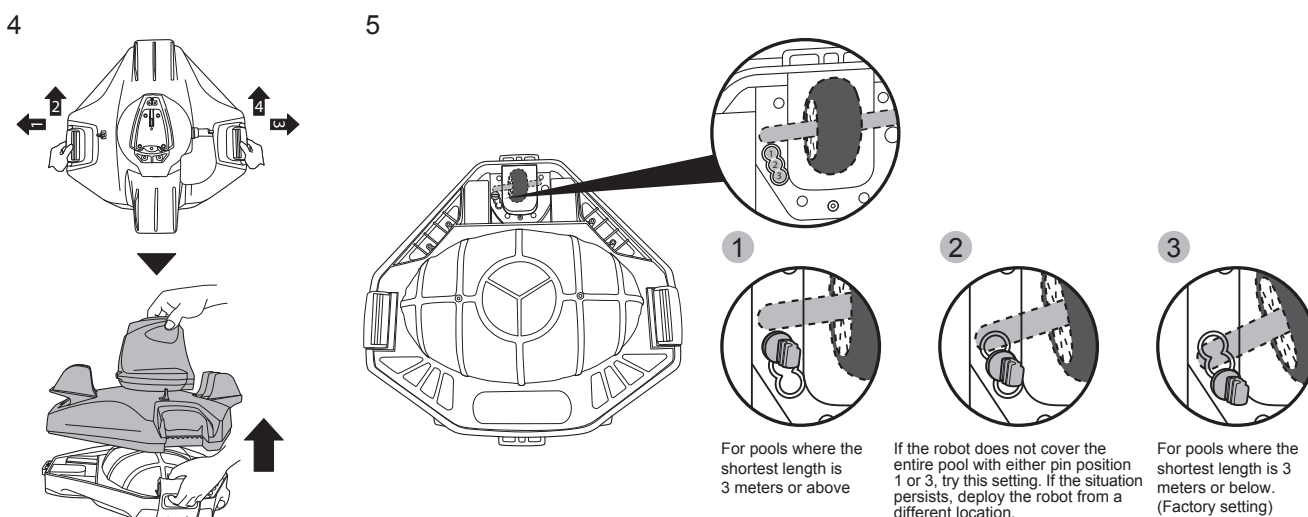
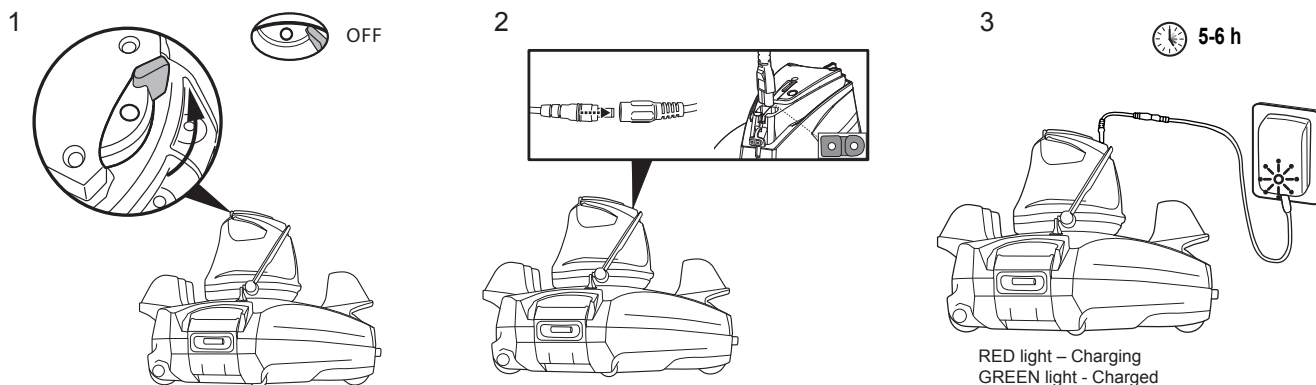
### WARNING For Charging

- Use only the original external adaptor and provided charging cable.
- Make sure the robot and the charger port are clean and dry before set-up.
- Make sure that the robot is turned off by sliding the switch to OFF position prior to charging.
- Fully charge the robot (about 5-6 hrs) before using it for the first time
- Power indicator light: No light - Power off / no power

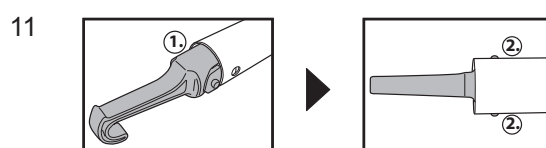
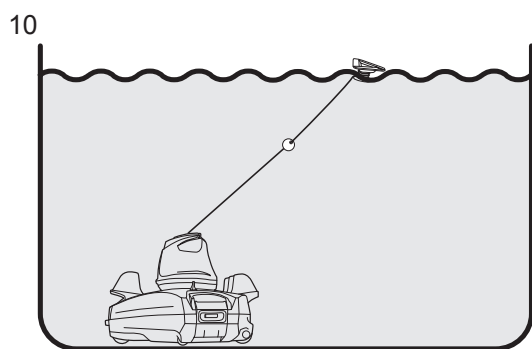
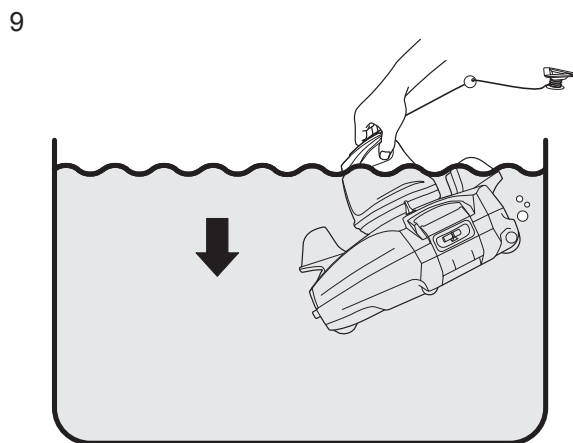
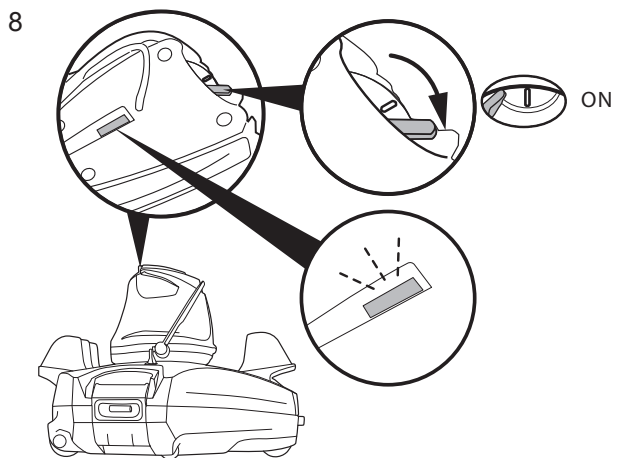
Light - Power on

Blinking light - Battery power will cease within 10 minutes.

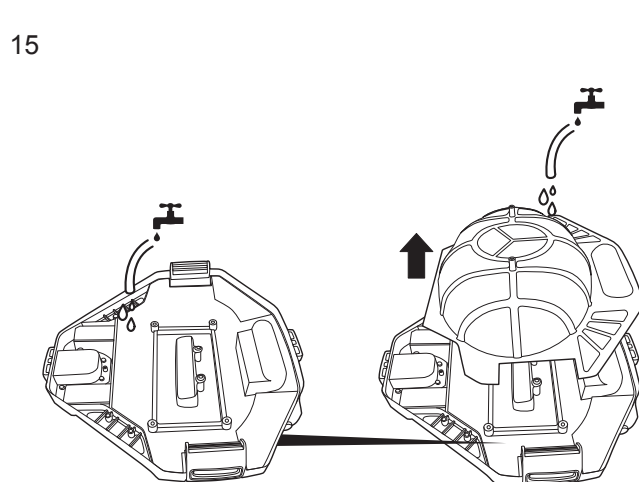
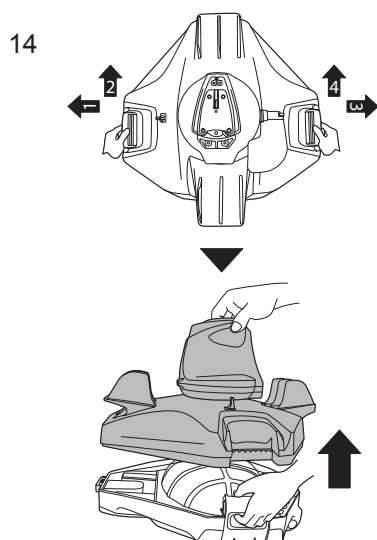
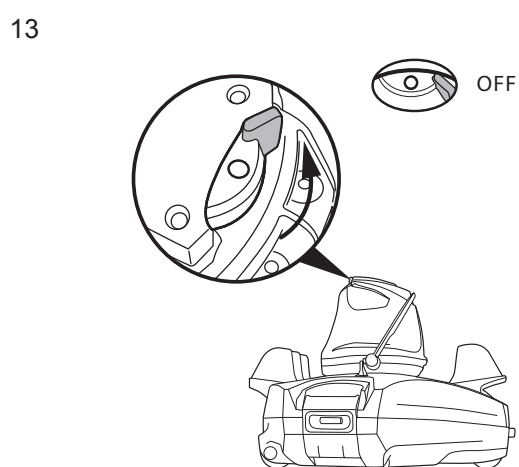
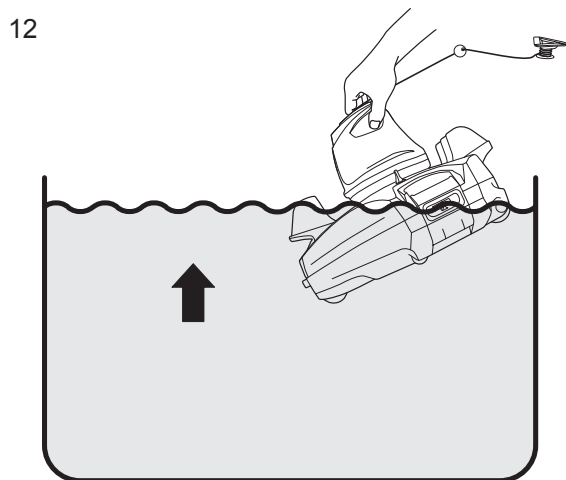
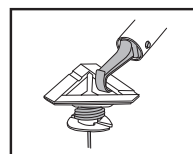
**Note:** Once the robot begins charging, the indicator light on the external adaptor will turn red. When the robot is almost fully charged, the indicator light will turn green.

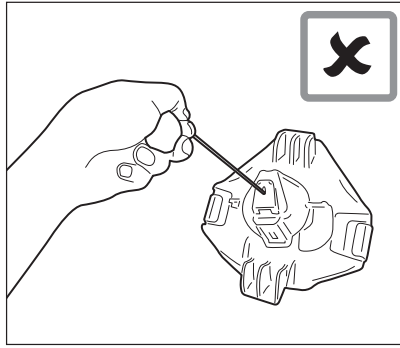
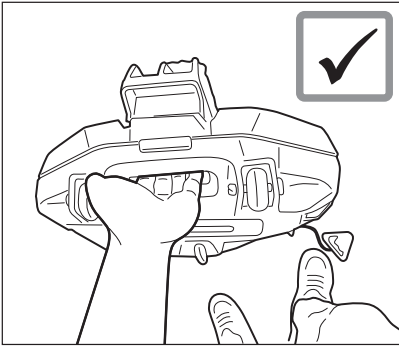


**Note:** Pry to detach the float cover and release the rope from the float to the depth of pool water plus about 0.5 m (19.7 in.).

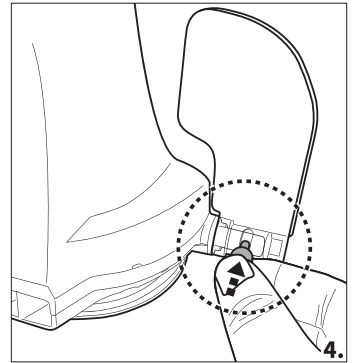
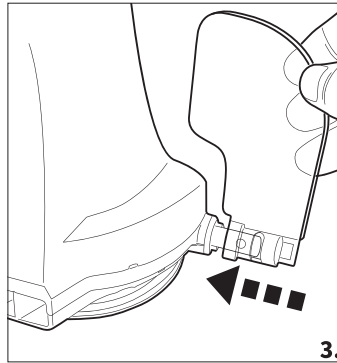
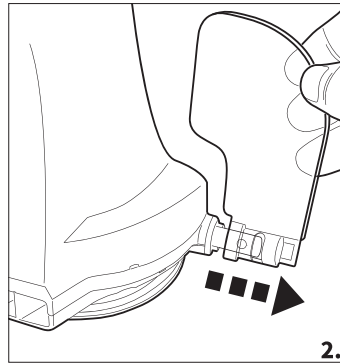
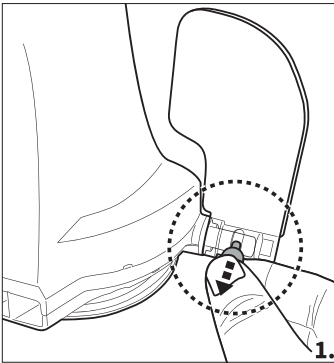


**Note:** If float is too far to be retrieved by hand, use the provided hook. Place the hook on the telescopic pole (not included) and then use the hook to retrieve the float.





## Flap replacement



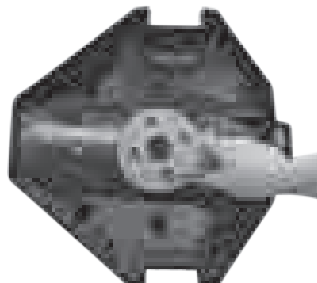
## Maintenance and Storage

1. Battery discharges on its own during storage. Make sure to fully-charge the robot before storage.
2. You must re-charge the battery at least once every three months when it is not in use.
  - Unplug the external adaptor from the socket and then unplug the charging cable from the external adaptor and robot.
  - Detach accessories from the robot. If necessary, rinse the robot and accessories with fresh water. DO NOT use detergent.
  - Be sure to drain the water from the robot before storing it.
  - Use a damp cloth to clean and dry the robot and its accessories.
  - Store them in a well-ventilated area away from sunlight, heat, ignition sources, pool chemicals and from children. Ambient temperature for storage should be 10°C – 25°C (50°F – 77°F). **NOTE:** A higher storage temperature may reduce the battery life.

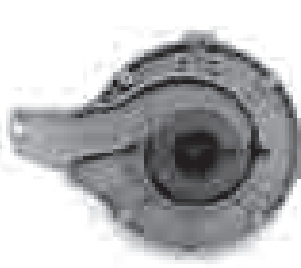
## How to remove the battery pack

Recommended tools (not included): Screwdriver.

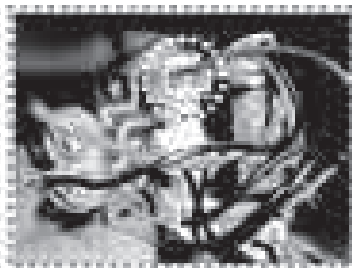
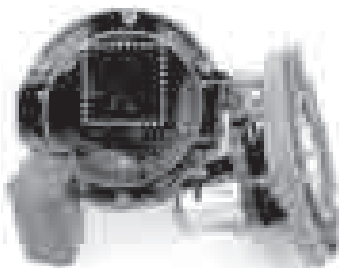
1. Release the top cover (preassembled with the swivel head). Turn the cover up side down and release the swivel head by turning its bottom locking plate counter-clockwise. Remove the swivel smoothing-ring.



2. Use the screwdriver to unscrew the 4 screws located on the bottom of the head to release the bottom plate at first. Use the screwdriver to unscrew all the screws on the base as shown. Remove the impeller and then pry up the base and remove it to expose head inside.



3. Remove the battery pack to expose the PCBA. To detach the battery connection wire, press the clip on the connector and then pull it out. **NOTE:** Wrap the connector immediately with insulating tape in order to avoid short circuit caused by contact of both wire terminals.

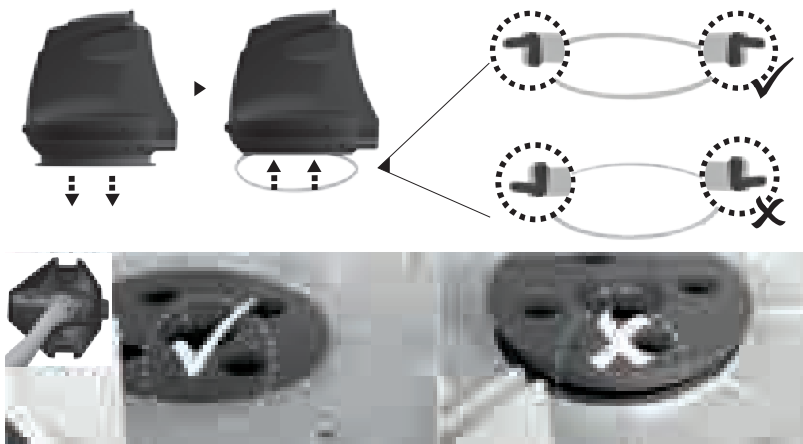


## DISPOSAL

Waste electrical products should not be disposed of with household waste. Please recycle where facilities exist. Check with your local authority or retailer for recycling advice.

## TROUBLESHOOTING

| Problem   | Possible Cause  | Solution   |
|---|---|--|
| Robot does not capture the debris   | Battery is running out  | Charge the robot again.  |
|   | Impeller is jammed  | Power off the robot and inspect the hole under the swivel head to see if the impeller is jammed by large debris. For assistance, please visit the support section on our website, <a href="http://www.bestwaycorp.com">www.bestwaycorp.com</a> . <b>WARNING!</b> Make sure the robot is off before the unit is serviced. |
|   | Suction mouth is clogged  | Remove clogged objects from the suction mouth.   |
|   | Impeller is broken  | For assistance, please visit the support section on our website, <a href="http://www.bestwaycorp.com">www.bestwaycorp.com</a> .  |
|   | Debris compartment is full  | Clean both debris compartment and filter cover.  |
| Robot stopped moving in the middle of pool but swivel head is still turning | Robot stopped by obstacle or large creases in the pool liner.                               | Check to see that if there is anything obstructing the cleaner. Remove the obstacle.   |
|   | Robot is stopped by suction from the main drain of pool floor                               | Turn off the filtration system as instructed in manual.  |
| Swivel head rotates repeatedly  | Air trapped inside the robot  | The swivel head may rotate repeatedly for a few minutes once the robot sinks to the pool bottom. This phenomenon will stop once the air trapped inside the robot is gradually discharged and the robot will begin to move regularly.   |
| Robot does not cover the entire pool  | Debris compartment is full  | Clean the debris compartment   |
|   | Operation time is shorter as expected   | Clean the filter compartment and recharge the robot for 6 hrs  |
|   | Moving direction is interrupted by water circulation generated by filtration system         | Turn off the filtration system (as instructed in filtration manual) at least 15 minutes before robot operation.  |
|   | Wheel is jammed   | Check and remove debris from the wheel.  |
|   | Position of locking pin is not set properly.  | Follow instruction to adjust the locking pin position.   |
|   | Algae renders the pool floor slippery which results in the robot going in circles.          | Scrub the pool bottom and robot wheels to remove the algae   |
| Robot moves along the pool wall   | Position of locking pin-is not set properly / robot facing direction is wrong at beginning. | Follow instruction to adjust locking pin setting. Make sure that robot's front/back faces the pool wall at beginning.  |
| Robot moves slowly or does not move at all.                                 | Debris compartment is full or filter cover is clogged.                                      | Clean the debris compartment. Flush the screen with water to remove small particles. If brush is deem necessary, use a soft brush to clean the screen gently. <b>Note:</b> make sure that the filter cover is In place before next operation   |
|   | Suction mouth is clogged  | Remove clogged objects from the suction mouth  |
|   | Impeller is jammed  | Power off the robot and inspect the hole under the swivel head to see if the impeller is jammed by large debris. For assistance, please visit the support section on our website, <a href="http://www.bestwaycorp.com">www.bestwaycorp.com</a> . <b>WARNING!</b> Make sure the robot is off before the unit is serviced. |

|   |  |  |
|---|--|--|
| Swivel head does not turn or turn noticeably slowly | Side flap does not come up.  | Check and remove any debris that hinders the movement of the flap.   |
|   | Swivel head bottom is jammed   | Detach the swivel head and smoothening-ring in accordance with instructions of section "How to remove the battery pack" from the manual, then:<br>- Remove trapped debris<br>- Verify the smoothening-ring and bottom plate are installed correctly (refer to below diagrams)<br>- Inspect the smoothening-ring for potential damages and wear and tear. Replace with a new one if necessary |
|   |  |  |
| Debris escapes from the robot                       | Suction mouth's flap ( at cleaner bottom) is damaged                               | Suction mouth's flap works like a door to prevent the debris from escaping from the debris compartment.<br>For assistance, please visit the support section on our website, <a href="http://www.bestwaycorp.com">www.bestwaycorp.com</a> .   |
|   | Debris clogged at suction mouth and prevents the flap to close.                    | Remove clogged debris from the suction mouth.  |
| Debris leaks outside at the filter cover            | Filter cover net is damaged  | Replace with a new filter cover.<br>For assistance, please visit the support section on our website, <a href="http://www.bestwaycorp.com">www.bestwaycorp.com</a> .  |
| Round float sinks                                   | Float is broken and water leaks in   | Replace with a new float.<br>For assistance, please visit the support section on our website, <a href="http://www.bestwaycorp.com">www.bestwaycorp.com</a> .   |
| Robot operation lasts shorter than advertised       | Battery is not fully charged   | Charge the robot for at least 6 hrs.   |
| Robot cannot be charged / recharged                 | Battery is damaged   | For assistance, please visit the support section on our website, <a href="http://www.bestwaycorp.com">www.bestwaycorp.com</a> .<br><b>WARNING!</b> DO NOT replace the battery by yourself. This could result in severe or fatal injuries and the warranty will be voided as a result.  |
|   | Charging base is not completely connected with external adaptor and robot.         | Make sure that the charger base is connected with external adaptor and robot properly and completely.<br>Refer to instruction manual.  |
|   | External adaptor is out of order   | For assistance, please visit the support section on our website, <a href="http://www.bestwaycorp.com">www.bestwaycorp.com</a> .<br><b>WARNING!</b> Using the wrong external adaptor will result in damaging the robot / battery and voiding the warranty as a result.  |